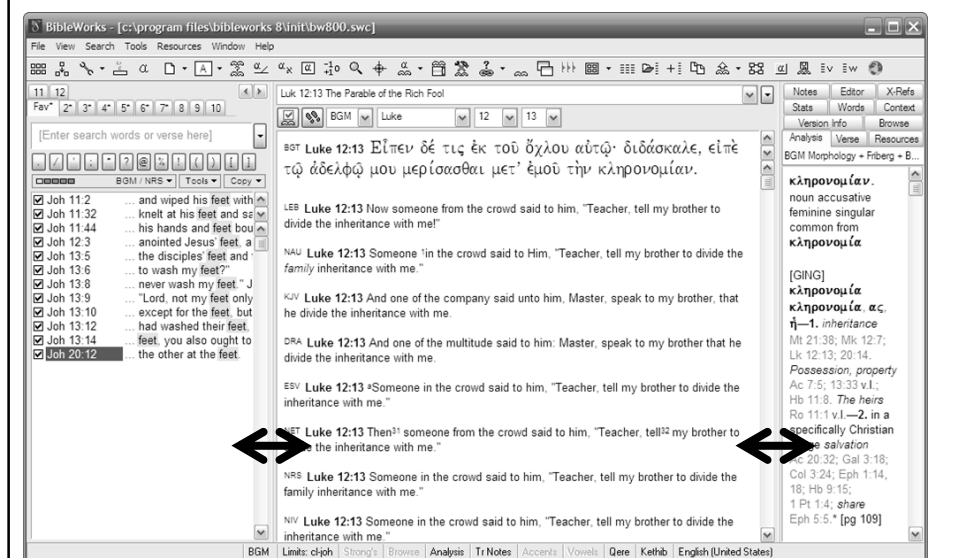


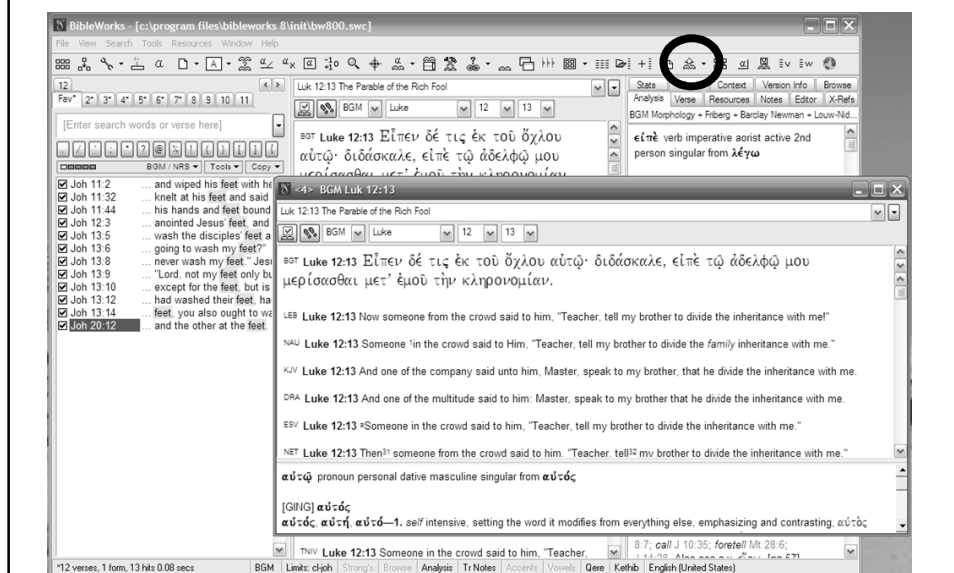
VIEWING TEXTS IN PARALLEL USING BIBLEWORKS

mgvh - ScrollandScreen.com – 2011.02

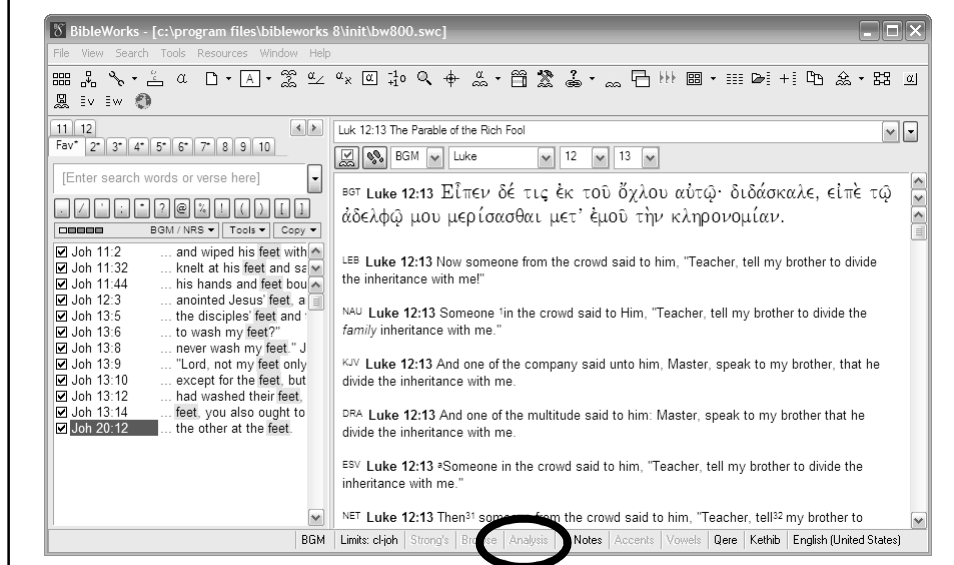
Use standard view (and expand Browse Window)



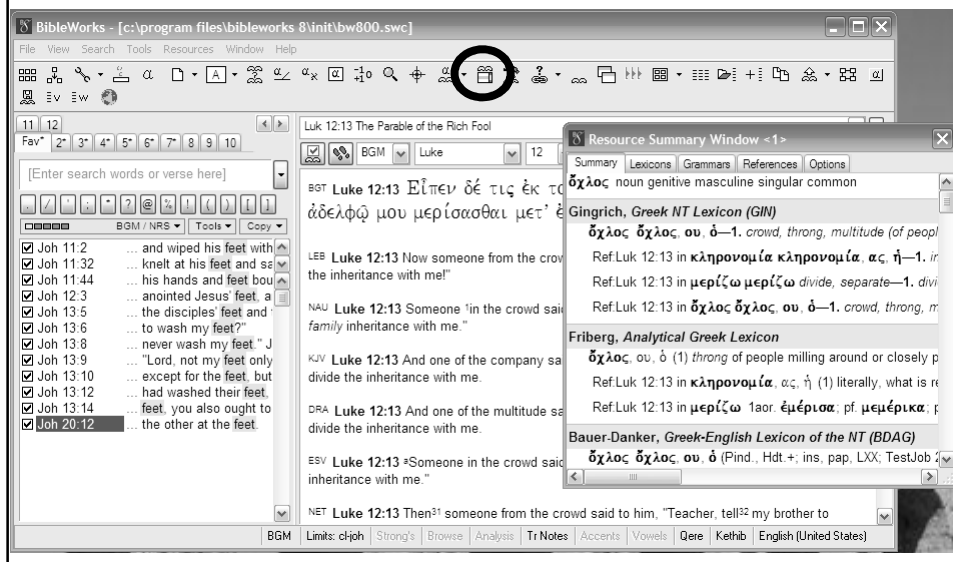
Use standard view and open new Browse Window



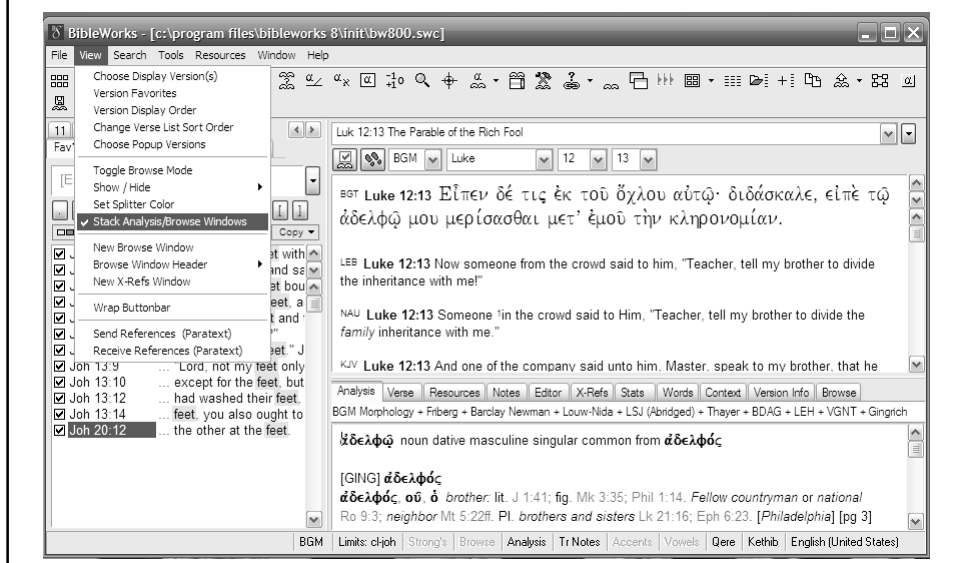
Toggle off Analysis Window



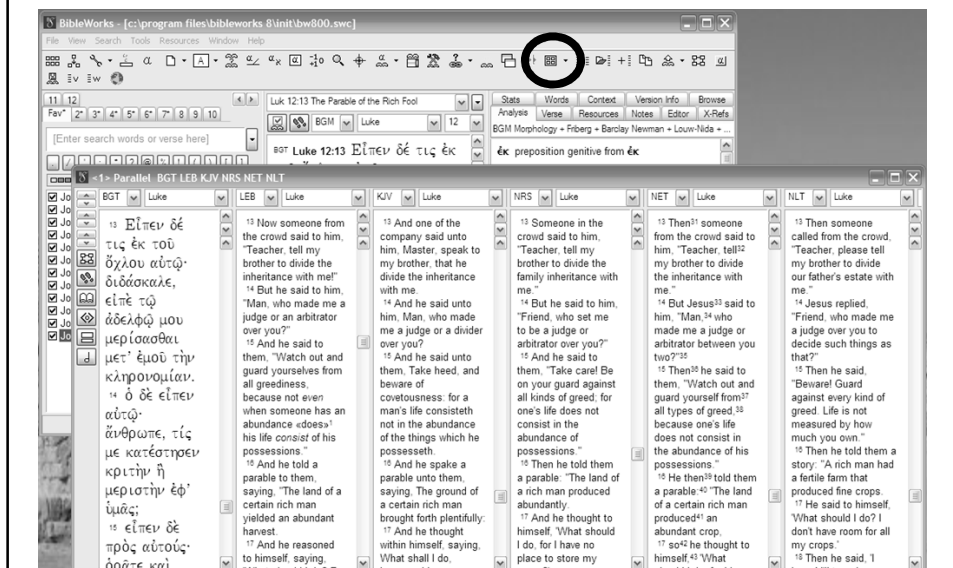
Toggle off Analysis Window and open floating Resource Summary Window



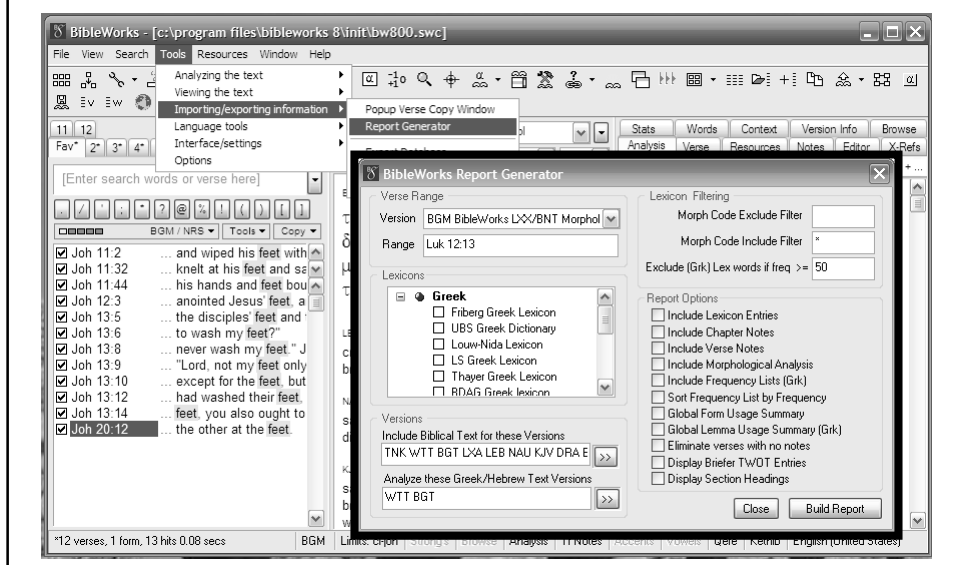
Stack Analysis/Browse Window



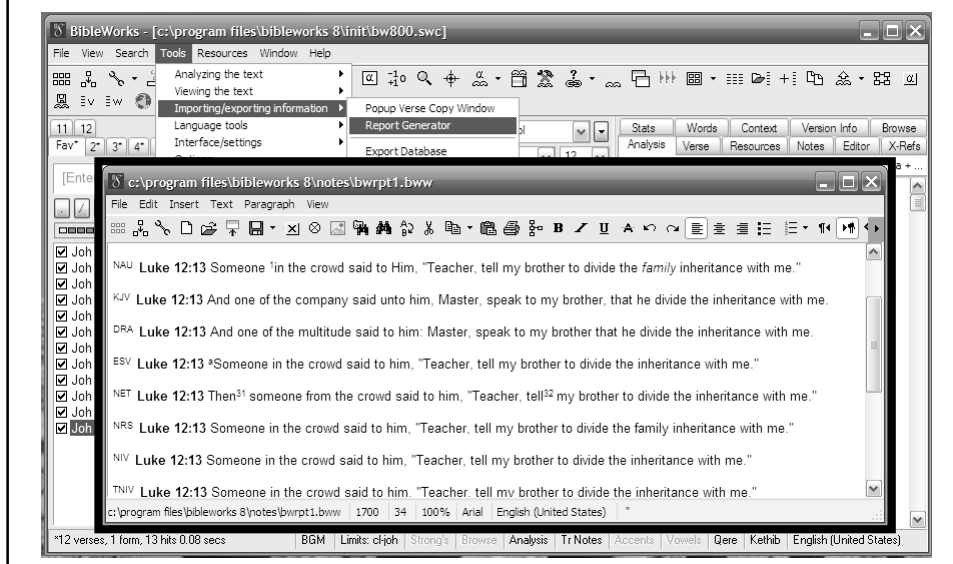
Use Parallel Versions Tool



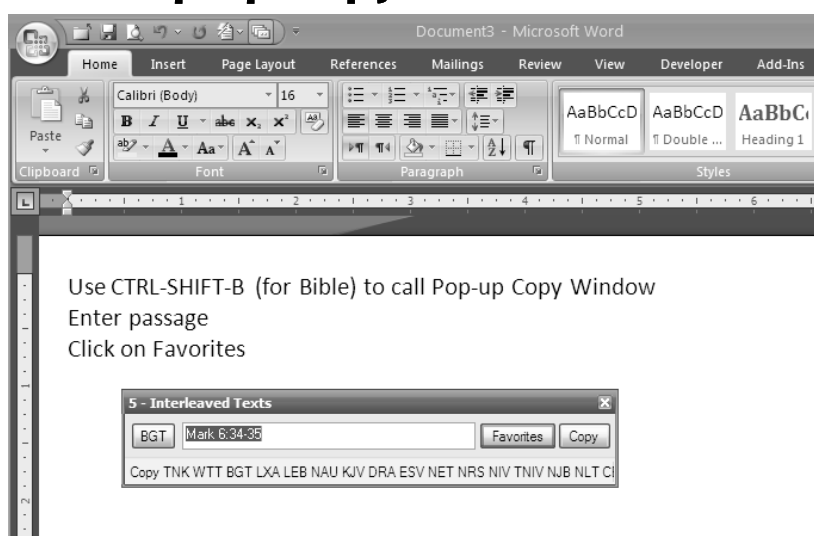
Use Report Generator



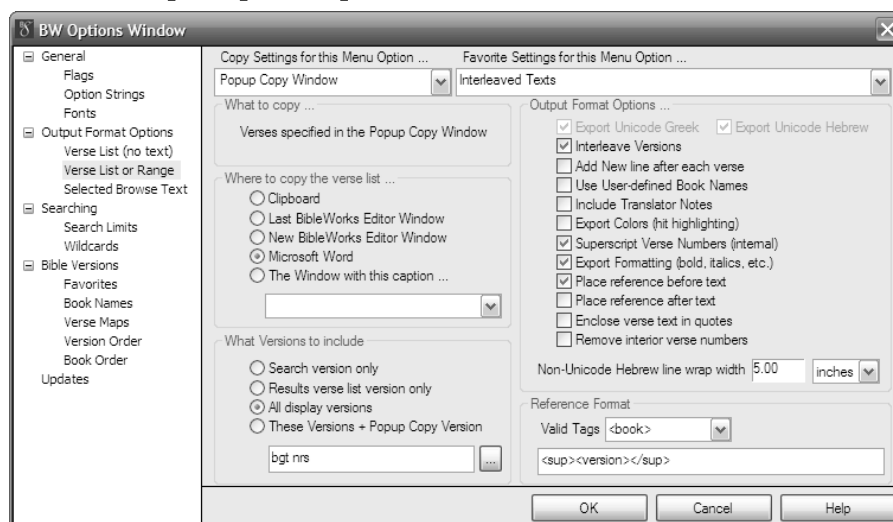
Use Report Generator



Use Pop-up Copy Tool in MSWord



Use Pop-up Copy Tool in MSWord



Create new Favorite using these settings

Use Pop-up Copy Tool in MSWord

